

SELIRO MANAGED MESH SOLUTION

In Short

Seliro Wi-Fi Mesh management solution is the result of integrating our device software platform, ENSEMBLE, with Qualcomm® Mesh Networking Platform (SON) and developing management capabilities in our Device and IoT Management Platform, MAESTRO.

The solution is based on open standards, enabling Operators to perform the complete management of mesh nodes via TR-069 and TR-181. Our device software platform, ENSEMBLE, enables the full usage of Qualcomm® SON Self -Configuring, -Managing, -Healing and -Defending, resulting in a powerful corner to corner coverage. Other characteristics to provide a perfect Wi-Fi solution include features such as load balancing, band steering and seamless handover. Other features to provide a perfect Wi-Fi solution include load balancing, band steering and seamless handover.

With MAESTRO Device and IoT Management Platform the Operator can configure and monitor mesh nodes and have the full control and visibility of the end-user mesh network. This enables personalized support for end user and to introduce new innovative services for Smart Home and IoT.

Seliro Managed Mesh Solution Values:

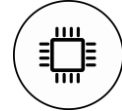
- Trouble-free Wi-Fi mesh activation with optimal setup
- Simplified view of Wi-Fi home network including Mesh Nodes
- Reliable on-demand access to mesh nodes
- Wi-Fi Diagnostics e.g. Interference, Signal Strength, Link Status info
- Monitoring features
- The Operator's natural entry point into IoT
- "Wi-Fi performance as-a-Service" - WaaS
- Automatic initiation & configuration minimizes Operator and End-User efforts
- Full operator manageability enables efficient operational procedures and optimizes end-user support responses
- Hardware agnostic

ENSEMBLE Wi-Fi Mesh device software features:

- Wi-Fi extender and video bridge capability with legacy routers
- Full mesh capability behind legacy routers
- Full mesh capability in Ensemble gateway software
- Plug and play provisioning
- Placement guidance
- Committed to Easy Mesh standardization
- Open standard Operator managed solution

MAESTRO Wi-Fi Mesh Device management features:

- Plug & play optimal home Wi-Fi mesh setup activation
- Remotely manage and control complete Mesh setup
- Mesh Home Network topology View
- Wi-Fi Diagnostics
- Proactive Monitoring and alarms



ENSEMBLE

Device Software Platform



MAESTRO

Device and IoT Management Platform

SELIRO MANAGED MESH SOLUTION

Network scenarios

Scenario 1:

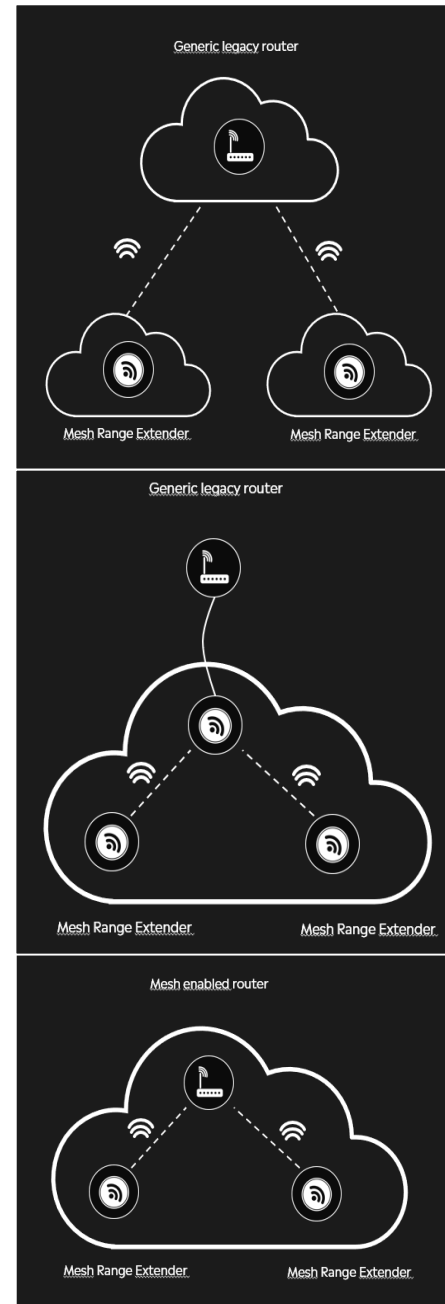
- Wi-Fi extender mode to extend Wi-Fi of a router that has good Wi-Fi capability
- A solution scenario to support extended Wireless connection to a legacy router
- A Wi-Fi repeater solution (not Wi-Fi mesh)
- Using a tree radio solution, a powerful Wi-Fi repeater solution
- All APs act as individuals,
- The clients (phones etc) determine themselves which AP to connect to
- Both the router and the mesh devices support band steering
- The solution is very suitable for Wi-Fi multicast video streaming
- Turning a wired STB into a wireless device
- Depends on the router capabilities, 3x3 or 4x4 at 5 GHz is required
- Easy connection via WPS

Scenario 2:

- Full Wi-Fi mesh solution behind legacy router
- A legacy router is not part of the mesh network
- Any Wi-Fi in the legacy router is typically turned off
- Ethernet is used for backhaul connectivity to the router
- The resulting Wi-Fi network to which clients connect, is created ONLY by the APs' Wi-Fi
- Management passes transparently through the legacy router

Scenario 3:

- Full Wi-Fi mesh solution integrated with a Wi-Fi mesh enabled router
- The router is a part of the Wi-Fi Mesh network
- Solution is based on the Wi-Fi Alliance Multi AP Standard
- The Wi-Fi mesh in the AP is typically used to connect to the router
- The resulting Wi-Fi network to which clients connect, is created by the Router's Wi-Fi and the APs' Wi-Fi TOGETHER
- Management is handled by the router
- Will be supported in dual-band routers running Seliro ENSEMBLE software through a software update

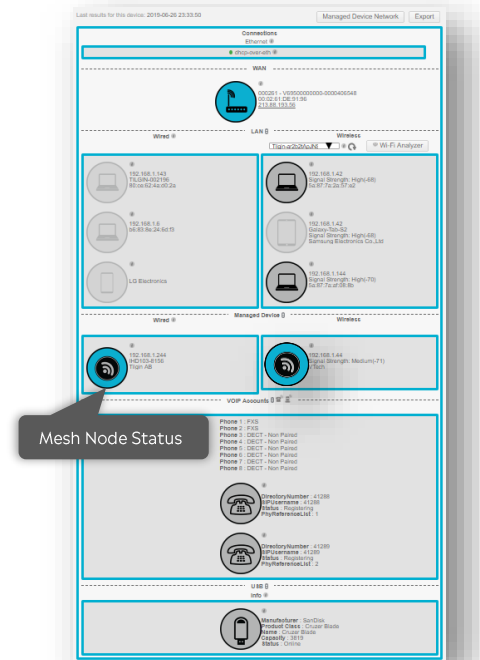


SELIRO MANAGED MESH SOLUTION

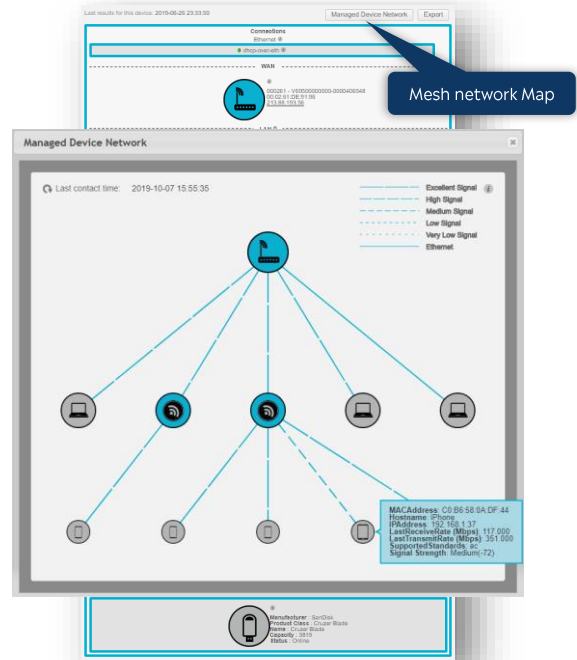
MAESTRO Wi-Fi Mesh management

Home Network Map

Including Mesh Nodes

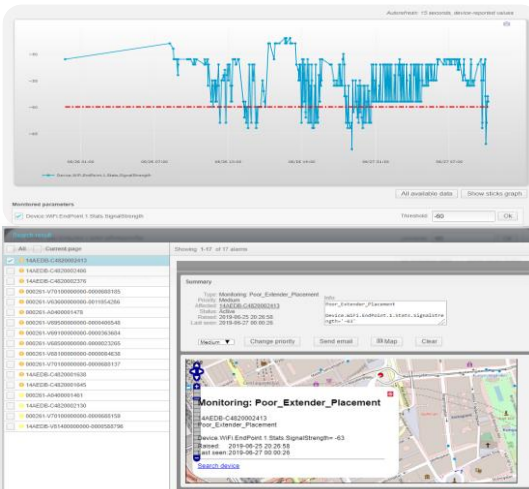


Mesh Topology Map



Proactive Alarm

When Mesh Nodes are not optimally placed



Mesh Device Management

- Reliable on-demand access to complete Mesh nodes via XMPP
- Configuration and Firmware Management
- Monitoring using light weight protocols.

